

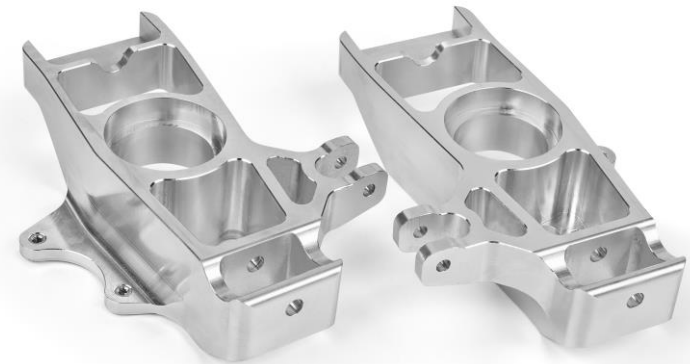
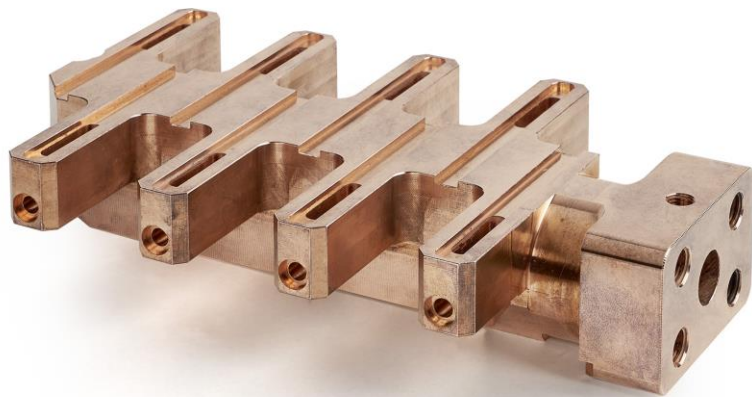
DEM

www.dem-barcelona.com

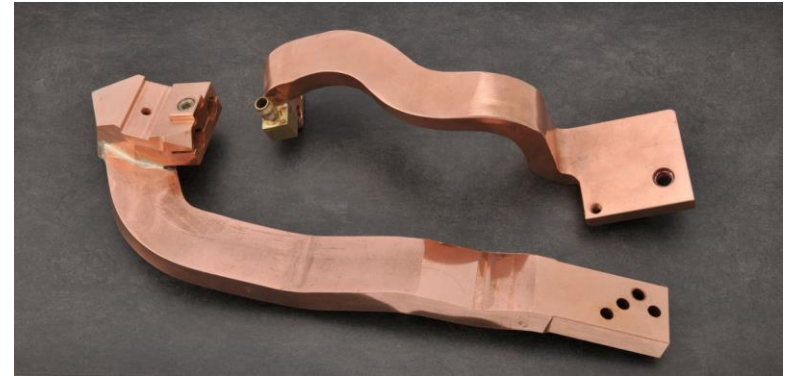
COPPER AND ALUMINIUM MACHINING



CUSTOMIZED PRECISION MACHINING



COPPER AND ALUMINIUM FORMING



DEEP DRILLING



Materials

We use materials from most important European suppliers

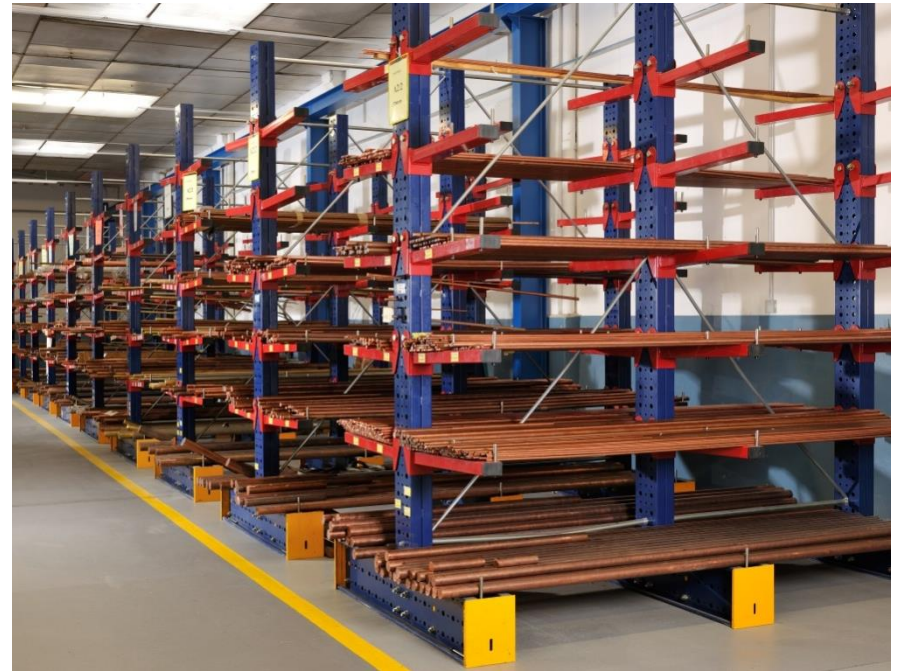
Main materials we permanently have in stock:

Copper

- Cu-ETP
- Cu-OFE
- Cu-OF
- CuCr1Zr
- CuCo2Be
- CuNi2Si
- CuBe2
- W78Cu

Aluminium

- Al 6082
- Al 7075
- Al 2017A



We carry a permanent stock to allow for Urgent Deliveries

DEM Machinery

- **7 Vertical Machining Centers (3 y 3+1 Axes)**

Maximum capacity 2.160x762x650 mm. Repeatability accuracy 5 µm.

- **4 Horizontal Machining Centers (4 Axes)**

Maximum capacity 900x800x1.020 mm. Repeatability accuracy 1 µm.

- **2 3D Machining Centers (5 Axes)**

Maximum capacity 3.000x800x806 mm. Repeatability accuracy 5 µm

- **7 Turning Centers**

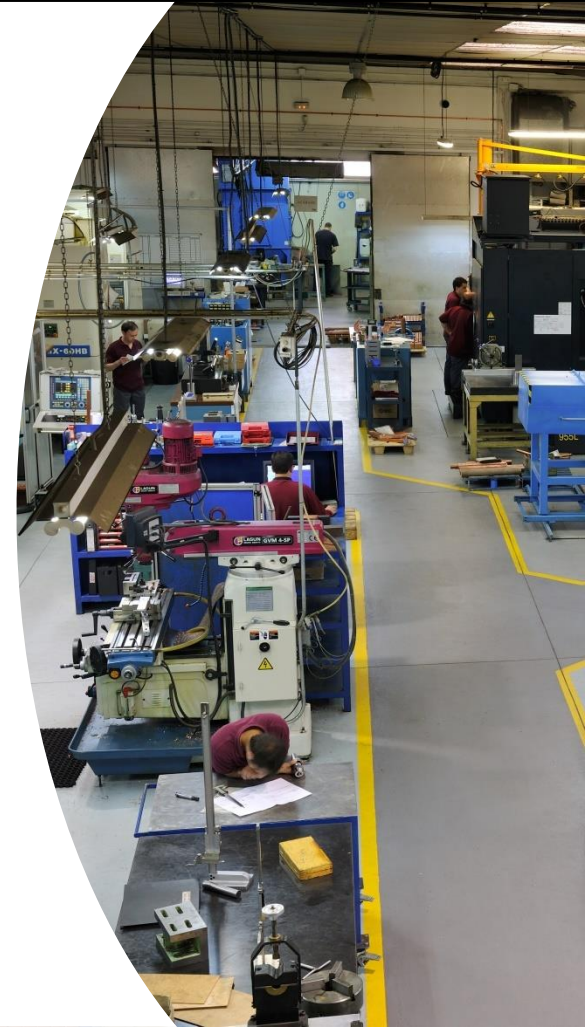
Maximum capacity 1.000x762x650 mm.

- **2 Deep Drilling Centers.**

Maximum capacity 2.160x762x650 mm. Precision 0.5x1.000mm.

- **4 Hydraulic presses and benders.**

Maximum bending capacity Ø 80 mm.



Quality Service

- Custom quality controls according to project requirements

EQUIPMENT:

- 2 Fixed Three-Dimensional Control Machine
Capacity 3000 X 1200 X 1000 / Precision 2,7 μ
- 3 Portable Three-Dimensional Control Machine
Capacity \varnothing 2.500 / Precision 26 μ / Laser Scan 63 μ
- 2 Portable Roughness Meter: Precision 0.01 μ
- 2 Fixed and 2 Portable Durometers
- Ultrasound machine control / Range 300mm, precision 0,5%





DEM CORPORATION: TEAM, OUR BEST VALUE

DEM Barcelona

Since 1994

85 Employees

DEM Welding

Since 2017

20 Employees



IFMIF-DONES: CURRENT DEM'S ROLE

PRESENT & MEDIUM TERM:

Current DONES-FLUX project: Copper Cavities

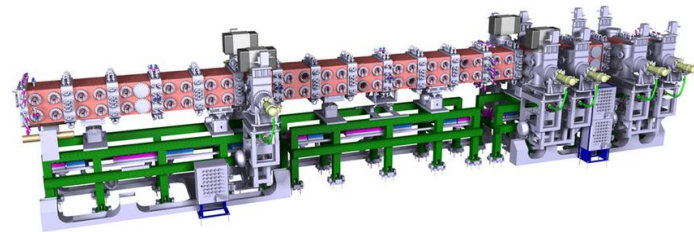
- Acquiring abilities and best practices in order to improve efficiency
- Gathering knowledge about main parameters affecting this efficiency
- Studying optimal materials behaviour and its performance
- Improving current manufacturing processes for achievable industrialization



IFMIF-DONES: FUTURE DEM'S ROLE

PRODUCT:

- Your **COPPER PARTNER**
- Providing accuracy and reliable service
- Manufacturing other copper and aluminium parts
- Copper metallurgical assessment



COLLABORATION:

- Open to new R&D projects linked to copper expertise acquisition
- Continuous improvement driven R&D



Quality and Environmental Certifications

ISO 9001 Quality System certified according to UNE-EN-ISO 9001 : 2015 Standard

ISO 14001 Environmental Management System certified according to UNE-EN-ISO 14001 : 2015 Standard

